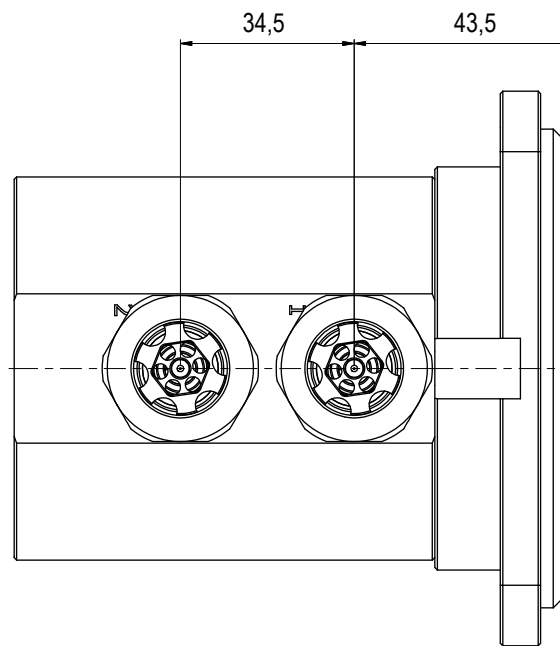
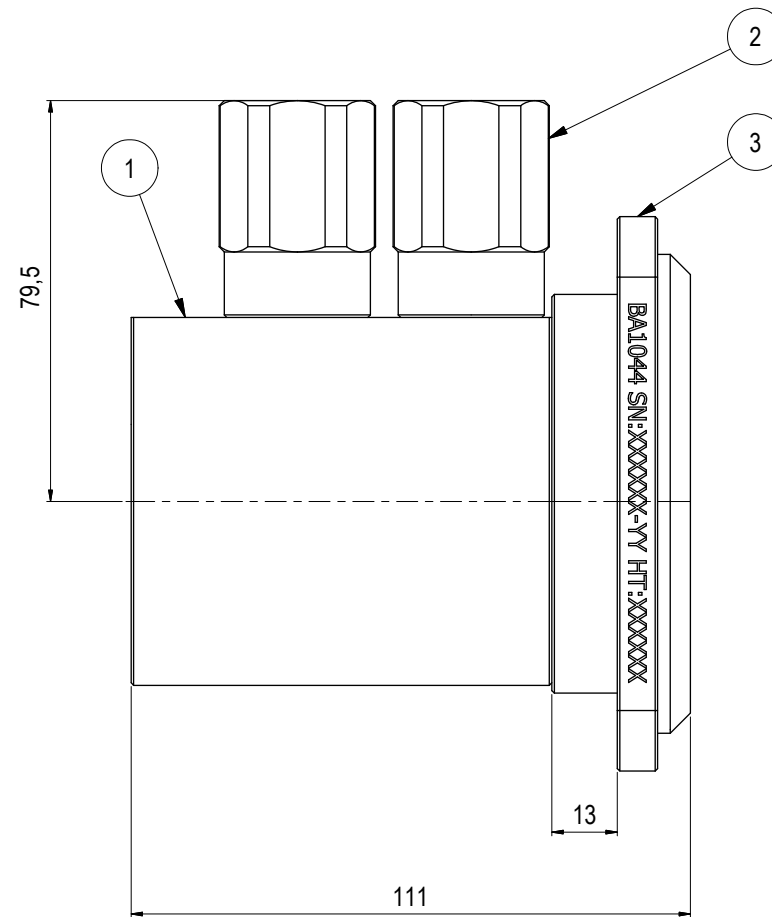
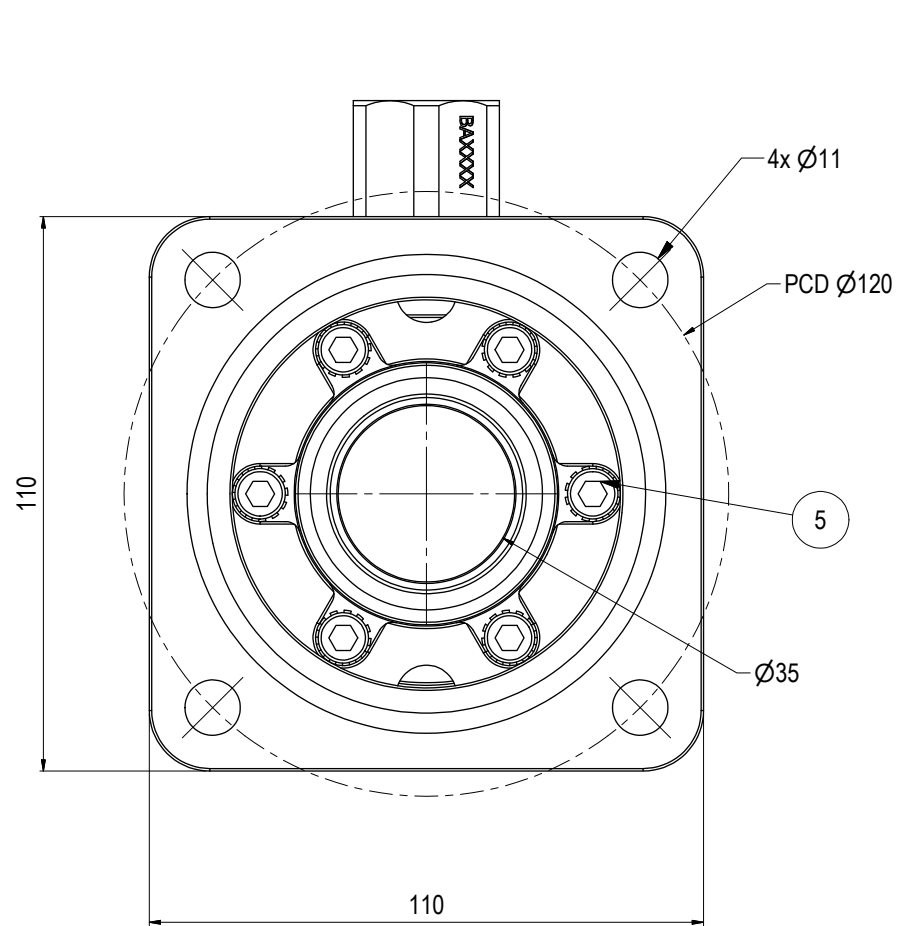


Parts List			
ITEM	QTY	PART No.	TITLE
1	1	PA0174	Ø35 DP Rec 10k Interv BSP 1/2" ID8mm
2	2	PA0088	2-Way Check Valves 10k Interv BSP 1/2" - 2,0-0,5 Bar FM-M
3	1	BA1044	Adapter Plate with Lock Interface Ø35 10k



NOTE: 1
 DESIGN CODE:
 API 17H/6A

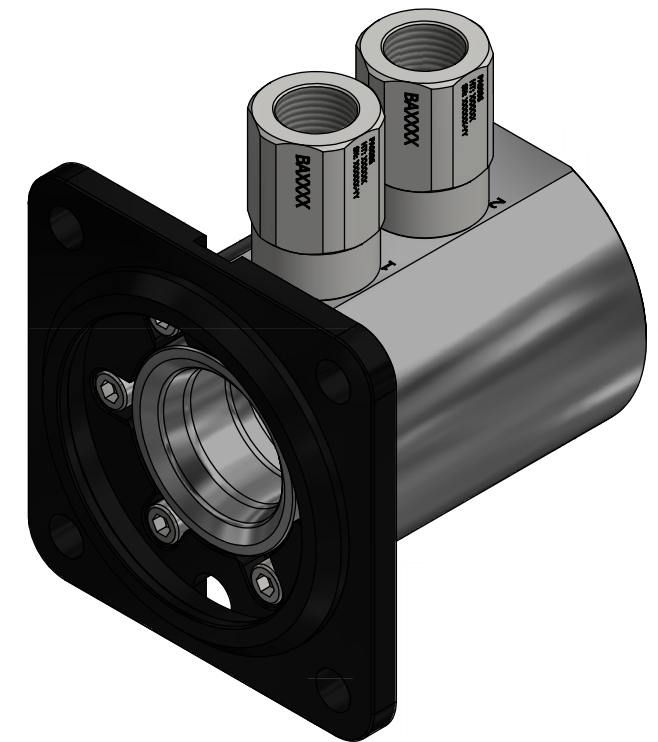
NOTE: 2
 TECHNICAL CLASSIFICATION:
 Article Type: 001-Hot Stabs
 Main Group: 1.01. Ø35 Hot Stab
 Intermediate Group: 1.1.02. Receptacle
 Sub Group: 1.1.2.02. Dual

NOTE: 3
 INTERFACE INFORMATION:
 Pressure Rating Bar: 690
 Design Water Depth: N/A
 Material: Intervention
 Weight: 3,5 kg
 Volume: 0,45 dm³
 Submerged Weight: 3,05 kg
 Surface Area: 1136 cm²
 Hydraulic: 1/2" BSP
 Mechanical: N/A
 Electrical: N/A
 Com. & Protocol: N/A

NOTE: 4
 SPAREPARTS:
 BA5287

NOTE: 5
 ADDITIONAL INFORMATION:
 The Ø35mm Blue Logic Hot Stab is made according to API 17H. This Hot Stab is in general designed for flow up to approx 25 liters pr. minute. We have pressure rating up to PSI 20K or 1380 Bar. The Hot Stab system can also be fitted with an lock-system.

Other hydraulic port interface can be delivered on customers request.



04	2.10.2025	9-IFU (Issued for Use)		WTJ	HNJ	WTJ
03	25.4.2014	9-IFU (Issued for Use)		WTJ	HNJ	WTJ
02	11.3.2013	7-IFC (Issued for Construction)		HNJ	TBA	HNJ
01	28.1.2013	7-IFC (Issued for Construction)		LAE	TBA	LAE
Rev.	Date	Reason for issue	Revision change	Made	Chk'd	Appr.



This Drawing is the Property of Blue Logic AS © and must Not be Loaned, Reproduced or Transferred to others without written Permission

Dwg Scale:	NTS
Dwg Proj:	
Dwg Format:	A3

Drawing title:
 Ø35 DP Rec 10k Interv wCV WL BSP 1/2"

Drawing number:
 BA3257

Rev.
 04